



# DUMP INSERT OWNER'S MANUAL

[www.camsuperline.com](http://www.camsuperline.com)





Thank you for purchasing a CAM Superline trailer.  
CAM Superline manufactures durable,  
dependable dump trailers, construction trailers and  
pickup truck dump inserts.

Built for the long haul, CAM Superline trailers  
deliver consistent performance today and for years  
to come. Not only are you investing in a superior  
trailer, you're also backed by CAM's knowledgeable  
service network.

This manual is designed to provide information for  
you to safely understand, use, maintain and service  
your CAM Superline trailer.

It is essential that you read this manual prior to  
loading or towing your trailer and follow all  
safety precautions and instructions.

Visit us online at  
**[www.camsuperline.com](http://www.camsuperline.com)**



## Table of Contents

Installation Instructions. . . . .	1
Warning - Prop Rod. . . . .	2
Installation of Remote Control. . . . .	3
Diagram Drawing of Dump Insert. . . . .	4
Dump Insert Installation. . . . .	6
Warning - Parking in Upright Position. . . . .	6
Installation Diagram. . . . .	6
Hydraulic Pump and Motor Replacement Parts. . . . .	8
Hydraulic Fluid Levels . . . . .	9
Troubleshooting Reservoir. . . . .	9
Warning - Payload Capacity Information. . . . .	9
Troubleshooting Hydraulic System. . . . .	10
Warranty Information. . . . .	11
Warranty Registration. . . . .	12

## Installation Instructions

Installation kit that is included with insert contains:

- Two (2) Battery Cables
- Four (4) Steel Clamps
- Four (4) 1/4" x 2" x 2" Steel Plate Washers
- Installation Manual
- Warranty Card

### WARNING

Do not Mount to Plastic  
Removable Bed Liners

**(Bolts are not provided)**

1. Remove the tailgate from your truck
2. Hydraulic fluid reservoir is shipped full. Before operating your insert, check your fluid level to be sure the hydraulic fluid is 1/2" from top of tank (check levels with the insert in the down position). If you need to add any fluid, Automatic Transmission Fluid (ATF) is the best, readily available fluid for most climate conditions.
3. Connect battery cables provided to hydraulic pump:
  - The red truck battery cable attaches to the stud of the starter solenoid with the black wire.
  - The black truck battery cable attaches to the aluminum pump block with a 5/16" x 3/4" bolt.
4. Slide Dump Insert into truck bed while checking for proper clearance.
  - The rear crossmember of the dump insert frame must not extend beyond truck bed.
  - Allow 1/2" minimum clearance between dump insert pump and the front wall of your truck bed.
5. Remove the Shipping strap from the front of the Dump Insert.
6. Secure power cables. Run battery cables to the positive and negative terminals of the battery.
  - Extreme caution should be taken when positioning cables.
  - Keep cables clear of dump insert rests on your dump frame.
  - Keep cables clear of your exhaust system and protect areas where they may rub.
  - Do not expose your cables below truck frame.

7. Push dump insert forward and position it properly in truck bed. Using the remote control, raise it.

- Prop Rod is provided for blocking.
- Do not block under loaded condition

## WARNING

To prevent accidental lowering, block insert with prop rod in the raised position for installing and servicing

8. Four ( 4) clamps are provided for easy installation of your dump insert. Set the clamps over the sides of the frame at points B and C (refer to diagram on page 6). **Note: Clamps at location C must be positioned over the rear crossmember on the insert sub frame.**
  - Clamps at position C should be placed as close to the hinge points as possible.
  - Whenever possible, use the bolt holes provided by front and rear bed bolts. If truck bed is welded, holes must be drilled into frame or crossmember. **Note: Do not mount to bed sheet; unit must be bolted to truck frame or crossmember.**
  - When it is necessary to mount through a crossmember, reinforce with steel plate washers as illustrated in the installation diagram on page 7 of the installation manual.
  - Use minimum of 1/2" bolts with lock washers and shake proof nuts.
  - Bolt dump insert down.
9. Once insert is bolted down, drill hole through clamps and through dump insert sub-frame. (using the hole in the clamp as a guide.)
10. Remove safety prop rod and cycle several times. Press the "up arrow" on the remote control to raise the dump bed. Press the "down arrow" on the remote control to lower the dump bed.
11. Re-check all bolts to make sure insert is secure.
12. Raise insert and block in the upright position using safety prop rod.
  - Unplug remote cord and hand control from the pump.
  - Mount remote control in cab of truck, following instructions on page 3.
  - **Remote control box must be mounted in cab of truck. Unit is not water-proof and extended exposure to moisture will cause damage to the control.**

## CAUTION

Use care when you drill to prevent drilling into gas tank or other truck parts

Your CAM Superline Dump Insert is now ready to be used. Please read the warning notice before operating equipment.

### WARNING

Prior to servicing your insert, make sure your safety prop rod is secured.

Never place any part of your body under the dump bed without the safety prop rod secured.

Do not block the dump insert bed under loaded condition.

When operating the dump insert bed, keep hands and body clear of the frame and the bed.

Always check behind the dump insert before dumping material.

Do not operate the dump insert bed while parked on a slope.

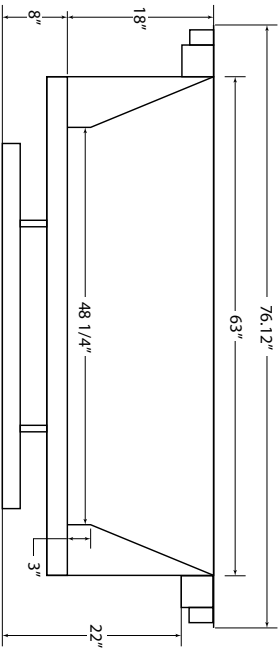
Failure to comply in any of these warnings, could result in severe personal injury or death!

## Installation of Remote Control Cable in Cab of Truck

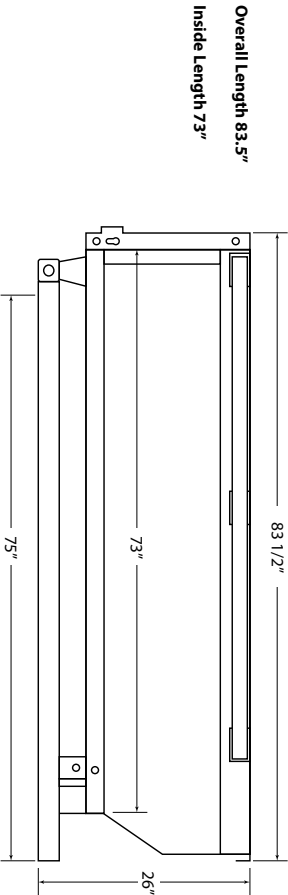
Drill 1-1/2" holes through the truck bed and through the cab of truck, behind the seat. Place remote control on the transmission hump in the cab and run the end of the cable under the seat and through the drilled hole in the cab. Slide rubber grommet over the end of the cable and seat it in the cab hole. Thread the cable under the bed and up through hole in bed to interior of bed. Slide the second rubber grommet over the end of the cable and seat it in the bed hole. Connect the remote control cable to pump as per enclosed wiring diagram. Seal rubber grommet and cable through the hole in cab of truck with silicone (not provided) to prevent moisture from entering cab.

**Note: Remote Control is not Waterproof**

# 6' Dump Insert



Overall Width 76.12"  
Inside Width 48.25"



Overall Length 83.5"  
Inside Length 73"



CAM Superline

SIZE DWG. NO.

A

6' Dump Insert

REV

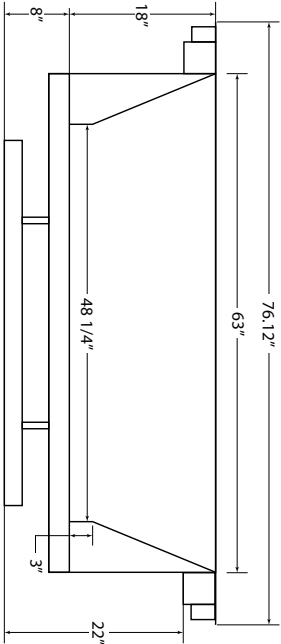
1

SCALE 1:8

SHEET 1 OF 1

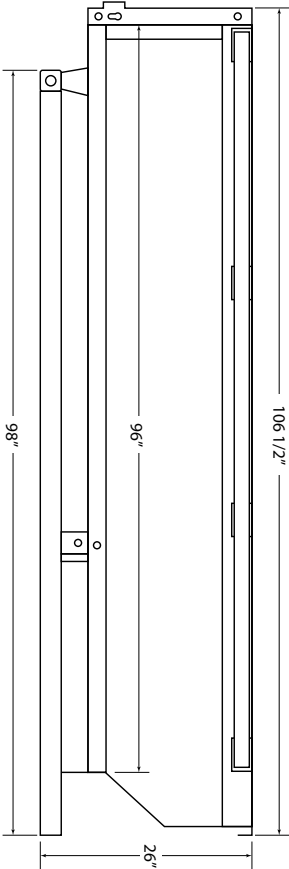


# 8' Dump Insert



Overall Width 76.12"  
Inside Width 48.25"

Overall Length 106.5"  
Inside Length 96"



CAM Superline

By Product

SIZE DWG. NO.

A

8' Dump Insert

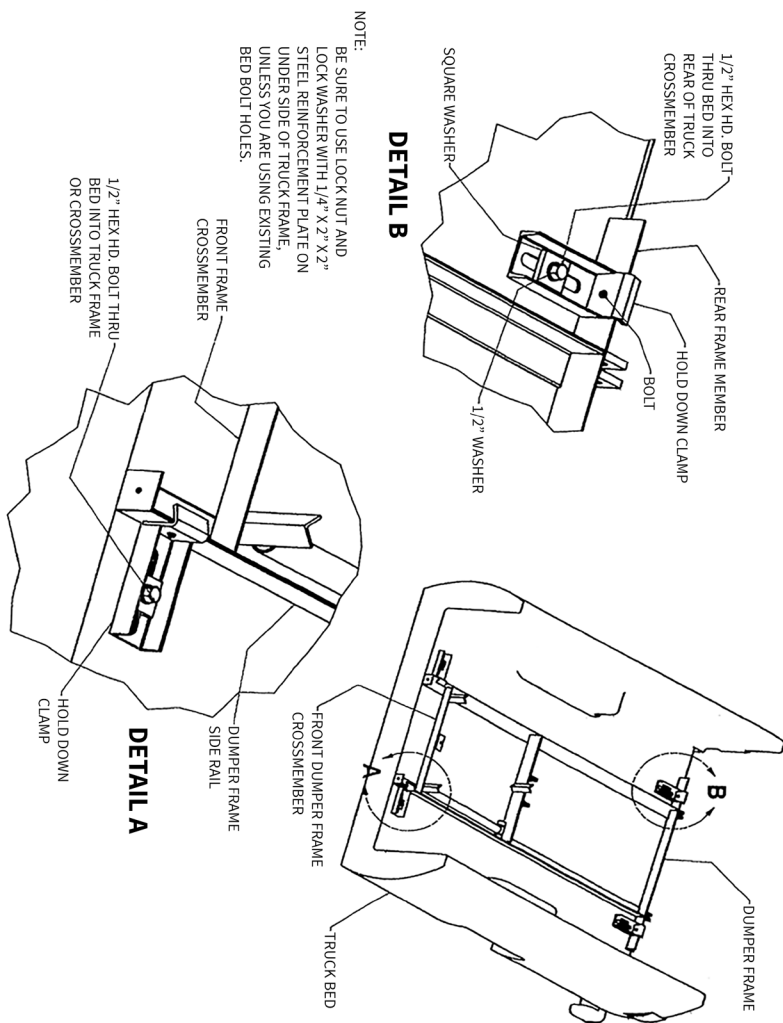
REV  
1

SCALE 1:8

SHEET 1 OF 1

# Dump Insert Installation

## Installation Diagram



## WARNING

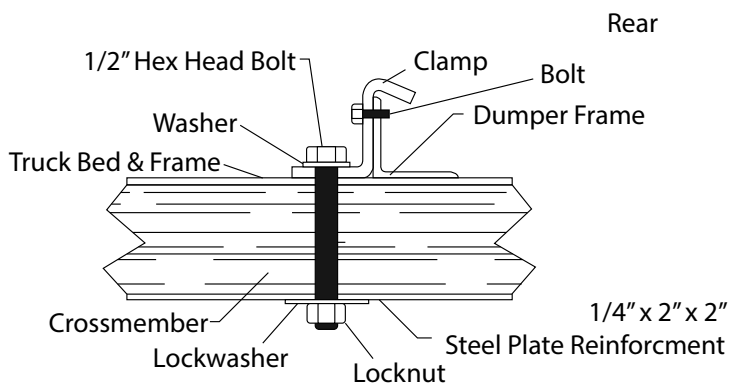
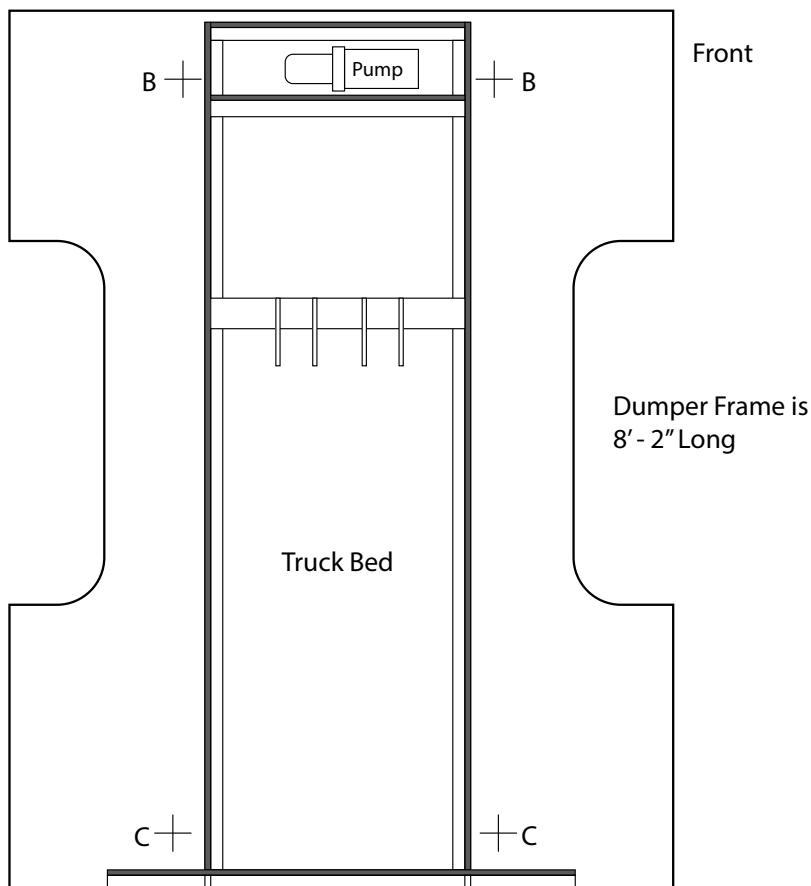
**YOU MUST PARK YOUR TRUCK IN AN UPRIGHT POSITION**  
If you park your truck facing downhill, water can accumulate in the truck bed; thus submerging your hydraulic pump under water.

This will destroy the motor.

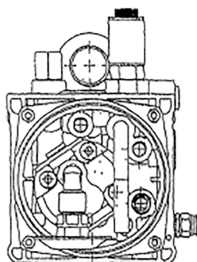
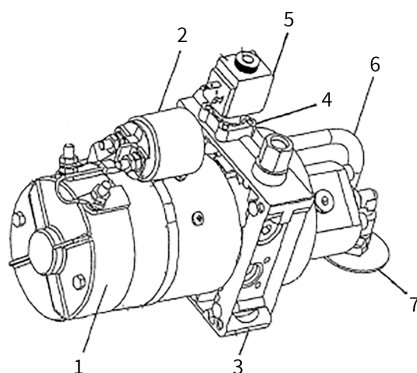
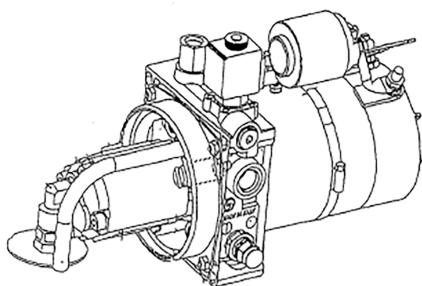
**THIS WILL VOID YOUR WARRANTY.**

Submerging your pump will ruin the pump motor. Always store or park your truck and dump insert facing up hill' so that accumulated rain water can drain from the bed of the truck.

\*\*The same warning applies to stored inserts on dealer lots.



# Hydraulic Pump and Motor Replacement Parts



#	Qty	Part Number	Description
1	1	HY1035	12V DC Motor
2	1	HY1080	Solenoid (Starting Relay)
3	1	XXXX	Gear Pump
4	1	HY1065	2 Way Valve
5	1	HY1070	Coil for Valve
6	1	HY1090	Drain Tube
7	1	HY1085	Filter Screen

## Hydraulic Fluid and Reservoir

1. AW-32 Hydraulic Fluid is the best, readily available fluid for most climate conditions.
2. Correct filling and operation procedure: Before operating your insert, check your fluid level to be sure the hydraulic fluid is 1/2" from top of tank (check levels with the insert in the down position).

Note: Do not use a solid plug or a fill cap without a filter/breather element or damage will be caused to the pump and/or reservoir.

## Problems Associated with the Reservoir

1. Clear oil, flowing out of the fill hole usually points to the following:
  - Cylinders were not fully retracted when the reservoir was filled
  - Reservoir is over filled.
2. Foamy oil flowing out of the fill hole points to the following:
  - Air is present in the system; that is, cylinders and or fluid lines. The response usually is "spongy" and the cylinder moves with "jerking" motion.
3. Water in the oil:
  - Water can enter the reservoir through the fill hole if the unit is washed with high pressure washers. Protect the unit whenever possible and change the oil if contamination occurs.

## Maintenance and Troubleshooting

Call an Authorized CAM Superline Dealer for exchange or service parts.

To keep your CAM Superline dump insert in top condition, follow these simple maintenance procedures:

1. Do not operate when hydraulic fluid is low (check your levels frequently)
2. In most cases a leaking relief valve is caused by dirt. This can often be corrected by unscrewing the relief valve and cleaning it thoroughly.
3. If it squeaks, grease it.
4. Keep the service area clean
5. DO NOT exceed 5 MPH with the dump insert in the upright position.
6. Avoid any sudden stops when the dump insert is in the upright position.

### WARNING

The payload carrying capacity of the pickup truck is determined by the GVWR of the cab chassis, the curb weight of the chassis, and the weight of the body. The pickup truck that carries any CAM dump insert must have sufficient carrying capacity and axle ratings for the dump insert.

## Troubleshooting Hydraulic System

1. Motor Fails to Start:

Possible Causes:

- A. Motor start solenoid switch
- B. Electric Switch
- C. "Open" Circuit
- D. Motor
- E. Dead Battery or Corroded Terminals

2. Bed fails to hold:

Possible Causes

- A. Check Valve-Main (Poppet Type)
- B. D.R. Lowering Valve (2 Way 2 Position)
- C. Manual Over Ride

3. Bed Drops Slowly:

Possible Causes:

- A. Low Charged Battery
- B. System Filter

4. Motor Runs Slow and Sluggish:

Possible Causes:

- A. Low Charged Battery
- B. Low Voltage
- C. Motor
- D. Relief Valve

5. Bed Fails to Lower:

Possible Causes:

- A. D.R. Lowering Valve (2 Way 2 Position)
- B. System Filter
- C. Electrical Switch
- D. "Open Circuit"
- E. Low Charged Battery

6. Motor Runs But Fails to Raise Load:

Possible Causes:

- A. D.R. Lowering Valve (2 Way 2 Position)
- B. Low Hydraulic Fluid
- C. Relief Valve
- D. Suction Valve
- E. Pump Losing Prime
- F. Worn Pump

## Warranty

CAM Superline offers a comprehensive three year warranty on dump inserts. The three year warranty covers all defects in material and workmanship and is effective the date you take delivery of your new dump insert. This warranty is limited to repair or replacement provided the purchaser returns the claimed defective product to CAM Superline or an authorized dealer with transportation prepaid by purchaser.

The obligation of this warranty shall be limited to repairing or replacing any part(s) that, in the opinion of CAM Superline, shall be proven defective in materials and/or workmanship under normal use and service.

This warranty does not cover damage or product failure caused by accident, misuse, negligence, overloading, improper attachment or improper maintenance. CAM Superline is held harmless for any injury or death caused by the misuse of this product. This warranty excludes any and all liability for incidental or consequential damages.

Please Note: Modification to the original design of the dump insert may void warranty.

Warranty is valid only to the original owner.

## Warranty Procedures

- All repairs must be approved by CAM Superline before work is provided. Lack of authorization before doing repairs may result in unpaid claims.
- All parts for repair will be provided by CAM unless otherwise authorized.
- Upon approval from our warranty department we will provide you with an RGA number
- Please reflect the RGA number on any invoices submitted.
- All warranties will be handled through the dealers.
- Warranty registrations must be on file.

## Warranty Registration

### Registration Information

Company Name: \_\_\_\_\_

Contact Name: \_\_\_\_\_

Address: \_\_\_\_\_

City: \_\_\_\_\_ State: \_\_\_\_\_ Zip: \_\_\_\_\_

Phone: \_\_\_\_\_ Fax: \_\_\_\_\_

Email: \_\_\_\_\_

(We will only use if needed to contact you. Email will not be shared)

Serial Number: \_\_\_\_\_ Model: \_\_\_\_\_

Dealer Name: \_\_\_\_\_

Purchase Date: \_\_\_\_\_

Please Mail Warranty Registration To:

CAM Superline

4763 Zane A. Miller Drive

Waynesboro, PA 17268

Or Fax to: (717) 749-3560

**“We Appreciate Your Business!”**







**Toll-Free**  
**800.378.7623**

**Website**  
**[camsuperline.com](http://camsuperline.com)**

This document is provided for informational purposes only. Pictures, illustrations, and text may include options and accessories not available at all times or as standard equipment. Contact your local dealer for exact specifications. All specifications are subject to change without notice. All trademarks, service marks, trade names, trade dress, product names and logos appearing in this document are the property of their respective owners. Novae Corp® is a registered trademark and CAM Superline® is a trademark of Novae Corp. All rights reserved. © 2020 Novae Corp®



**CAM Superline Trailers**  
**Novae Corp**  
**4763 Zane A. Miller Drive**  
**Waynesboro, PA 17268**